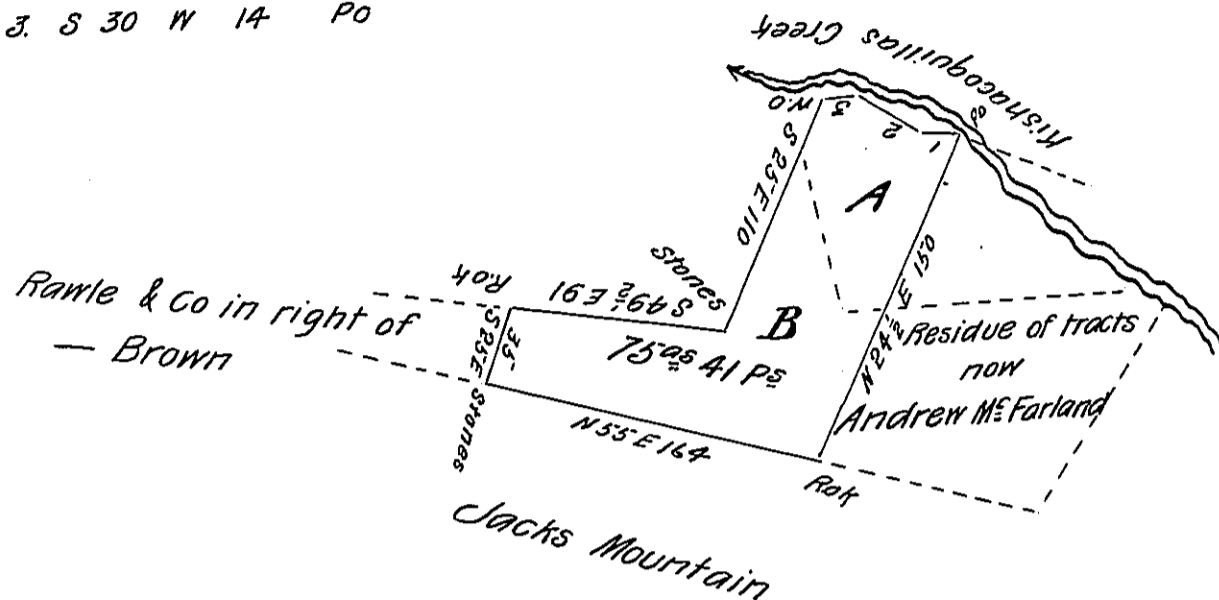


FORM NO. 1.

Courses & distances
down Creek

- 1 S $52\frac{3}{4}$ ° W 22.4 P₀
- 2 S 70° W 42 P₀
- 3 S 30° W 14 P₀



A draught of 75 acres & 41 perches and the allowance of six per cent for Roads &c. Situate in Armagh township Mifflin County being parts of two tracts of land A. is 20 acres 41 perches of a tract surveyed to William Galloway 22nd of December 1773 on Warrant date 23rd Sept 1773. & contains 40^{as} 92 P₀. B is 55^{as} of a tract of land surveyed to Robert Mitchel & John Whorry the 27th Sept 1797 on their Warrant dated the 20th day of June 1797 and said to contain 100^{as} 132 P₀. The above Resurveyed & laid off for Nancy Sterrett 3rd June 1834.

David Hough D.S.

To John Taylor Esq^r

Surv^r Gen^l of Pa

IN TESTIMONY that the above is a copy of the original remaining on file in the Department of Internal Affairs of Pennsylvania, made conformably to an Act of Assembly approved the 16th day of February, 1833, I have hereunto set my Hand and caused the Seal of said Department to be affixed at Harrisburg, this twenty ninth day of January 1906.

Joseph P. Brown
Secretary of Internal Affairs.